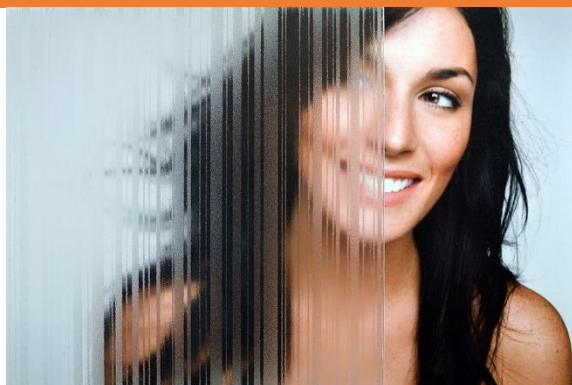


## SOLYX SimGlas®

## SGV-6613 Frosted Strié



### Product Details

SGV-6613 Frosted Strié is a translucent, embossed film with a pattern of decorative frosted lines of between <1mm-7mm in thickness. It is made of durable vinyl and is supplied with a silicone coated liner which protects the clear, pressure-sensitive adhesive. Recommended for application to interior glass (inside surface), it is ideal for decorative or architectural applications.

### Flammability Rating

This product meets **Class B, s1, d0**, as specified in **BS EN 13501-1:2018**.

This product meets ASTM E84 and is classified as Class A as defined in NFPA 101, Life Safety Code®.

### Specification

Product Code	SGV-6613
Film Type	Vinyl
Adhesive Type	Pressure-sensitive
Usage	Interior
Available Roll Width(s)	48"
Thickness	76 - 101 micron
Visible Light Transmission	77%
UV Transmission	66%
Infra-Red Transmission	71%

### Installation & Warranty

#### Installation

Installation should be in accordance with the manufacturer's installation instructions. This film is applied using the same methods used for installing window films.

#### Warranty

This product will be free from defects in material and manufacture for a period of five (5) years from the date of installation. See warranty information for specific details.

### Product Construction

#### Face Film

76-101 micron Vinyl

#### Adhesive

Clear, Pressure-Sensitive

#### Release Liner

Silicone Coated

### Distribution & Contact Information

Solyx® Decorative Films are available through authorised window film installers and signage companies, or directly from Glass Films.

#### Contact Information

Glass Films

Tel: +44 (0) 800 970 6366

Email: [sales@glassfilms.eu](mailto:sales@glassfilms.eu)

Web: [www.glassfilms.eu](http://www.glassfilms.eu)