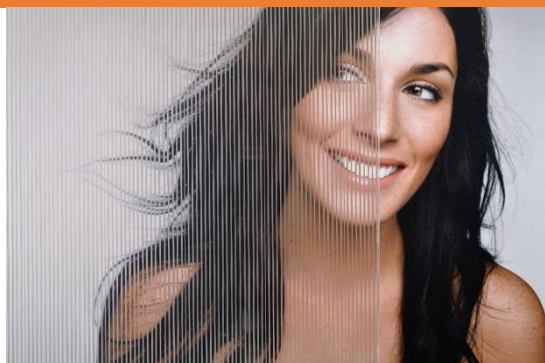


## SOLYX®

## SX-C361 Thin Wavy Lines



### Product Details

Thin Wavy Lines. A subtle fine etched lines design providing semi-obscure. Printed on a 100% UV blocking optically clear window film.

### Flammability Rating

This product meets **Class B, s1, d0**, as specified in **BS EN 13501-1:2018**.

This product meets ASTM E84 and is classified as Class A as defined in NFPA 101, Life Safety Code®.

### Specification

Product Code	SX-C361
Film Type	PET
Adhesive Type	Pressure-sensitive
Usage	Interior
Available Roll Width(s)	48"
Thickness	64 micron
Visible Light Transmission	65%
UV Transmission	57%
Infra-Red Transmission	68%
Total Solar Energy Rejected	38%

### Installation & Warranty

#### Installation

Installation should be in accordance with the manufacturer's installation instructions. This film is applied using the same methods used for installing window films.

#### Warranty

This product will be free from defects in material and manufacture for a period of five (5) years from the date of installation. See warranty information for specific details.

### Product Construction

#### Face Film

64 micron PET

#### Adhesive

Clear, Pressure-sensitive

#### Release Liner

Silicone Coated

### Distribution & Contact Information

Solyx® Decorative Films are available through authorised window film installers and signage companies, or directly from Glass Films.

#### Contact Information

Glass Films

Tel: +44 (0) 800 970 6366

Email: [sales@glassfilms.eu](mailto:sales@glassfilms.eu)

Web: [www.glassfilms.eu](http://www.glassfilms.eu)